

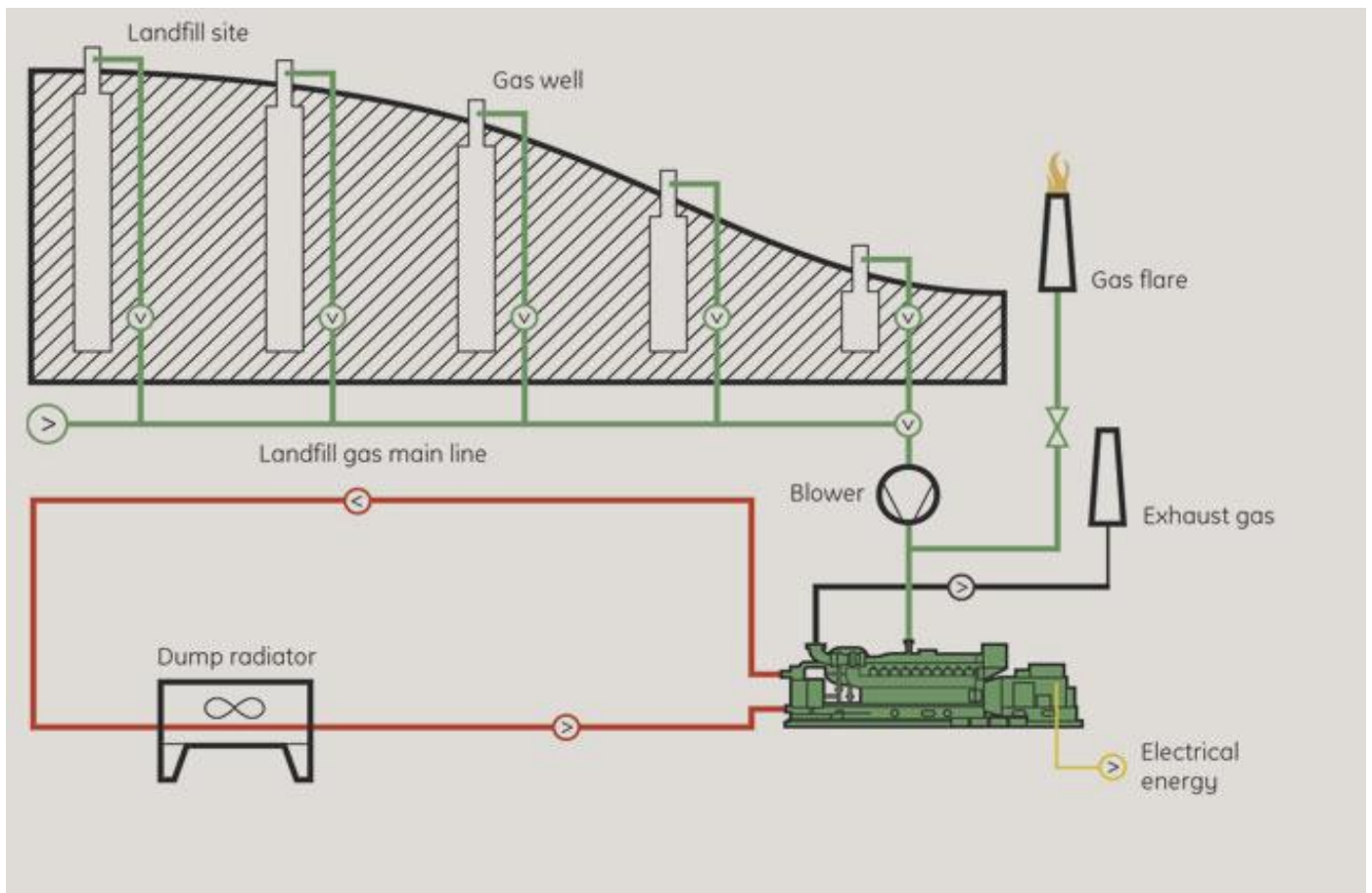
JGC 320 GS-L.L GE JENBACHER ENGINE GENERATOR



Stuart B
MILLNER
& ASSOCIATES

Is proud to Represent Delaware County Electrical Co-Operative in the sale of this GE Jenbacher Genset-Container JGC 320 GS-L.L waste to energy powered engine generator.

From Waste to Power



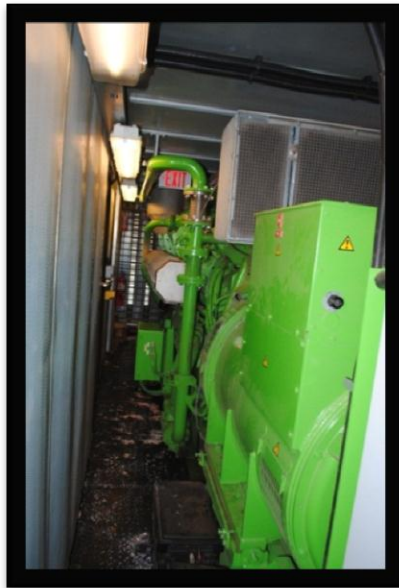
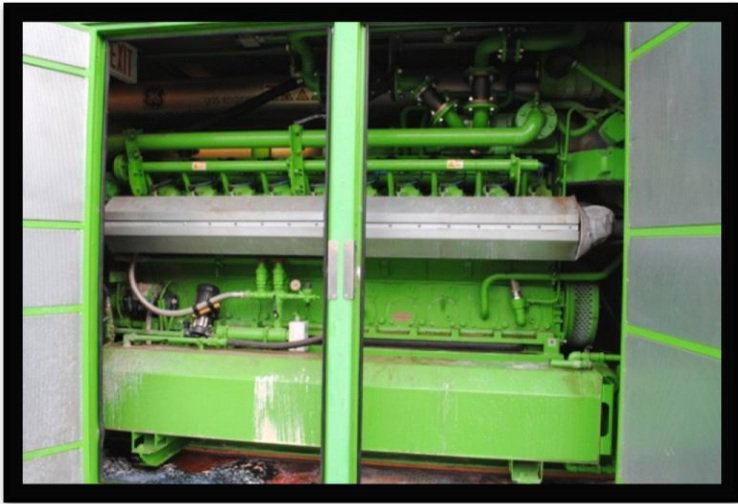
This JGC 320 GS-L.L gas engine generator provides economic and eco-friendly utilization of natural gas, biomass and municipal waste for power generation. Organic waste is processed into biogas from a broad spectrum of sources (landfill gas, sewage gas, combustible industrial waste gases, coal mine gas, abandoned mine gas, etc.), which serve as the energy source for the engine. The generated electricity is usable on your site as well as being available to be fed into the public power grid. One of these units reduces annual emissions equivalent to 46,500 tons of CO₂, planting 9,000 acres of forest or averting the use of 60,000 light bulbs while producing sufficient energy to provide 2,700 EU homes with electricity. Long service intervals, maintenance-friendly engine design and low fuel consumption ensure maximum efficiency in the GE Jenbacher Type 3 engines. The Jenbacher is an efficient, durable and reliable piece of machinery. Optimized components prolong service life even when using non-pipeline gases such as landfill gas. There are more than 1,300 Jenbacher landfill gas systems in use worldwide.

This particular unit has accrued only 23,000 hours of operating use, scheduled maintenance is up-to-date and all records have been maintained by the Delaware County Electric Cooperative.

First Class Nationwide/ International Sale



Exterior View



Interior View

Complete list of Landfill Gas Generation Assets for Site Relocation



JJ Crew Gas Cleanup/Compression Skid



NOVA 41270QN4CW Oxygen and Methane Analyzer 8000



Shipping Container Metal Bldg



Office Trailer Approx. Dimensions 10'X30'

- Fluid Comp GF90 Flow Meters
- QED/Pine AP4 Pneumatic Well pumps
- Sensaphone Model 800 Automatic Phone Notification Device
- Hubbell AR11SF Disconnect Switch, Group Overhead
- Briskheat DHCH15, 120V Drum Heater Bands
- HP Laser Jet 4015 N Printer
- QEI RTU (6Cp6 Card, Input & Output Control cards
- G&W Viper GWI 531-1,SEL351R, IPS100 Recloser with Control relay, interconnect relay
- Landtec GEM2000 Portable Gas Analyzer
- ADS LLC. QR775010A0 Spider-Data Communication Device
- Positron POS751950/13 High Voltage Surge Protector
- Hindle Power AT 10.1, 24V Battery Charger
- Kerosene Salamander
- Post Glover Ground Resistor
- RFL RFL9745 Communication Protection Device

